

District Organization
2019-20

USD 232
De Soto, Shawnee, Lenexa, Olathe
Communities

Board of Education

President
Danielle Heikes Position 6

Vice President
Rachele Zade Position 4

Board Members
Bill Fletcher Position 1
Ashley Spaulding Position 2
Stephanie Makalous Position 3
John Gagnat Position 5
Rick Amos Position 7

Superintendent
Frank Harwood

Clerk of the Board
Wendy Denham

Assistant Superintendent
Administration & Education
Alvie Cater

Assistant Superintendent
Business & Operations
Ken Larsen

Page 3

Director
School Improvement
Michelle Hite

Director
Technology
Brandon Riffel

Director
HR—Elementary
Carrie Handy

Director
HR—Secondary
Brian Schwanz

Director
Student Nutrition
Jolyn Baldner

Page 4

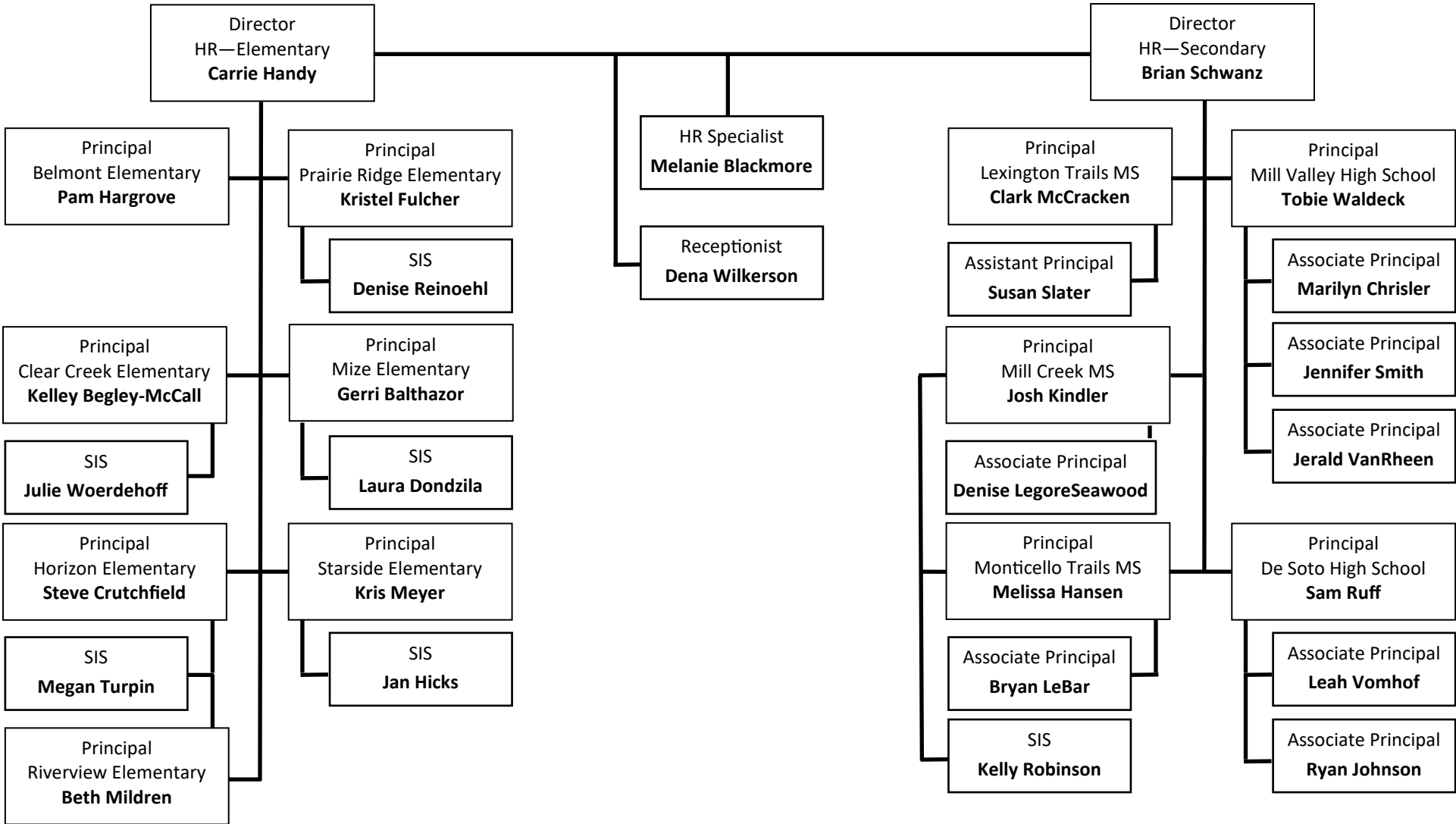
Director
Facilities &
Transportation
Steve Deghand

Director
Curriculum & Instruction
Joe Kelly

Director
Special Education
Lee Hanson

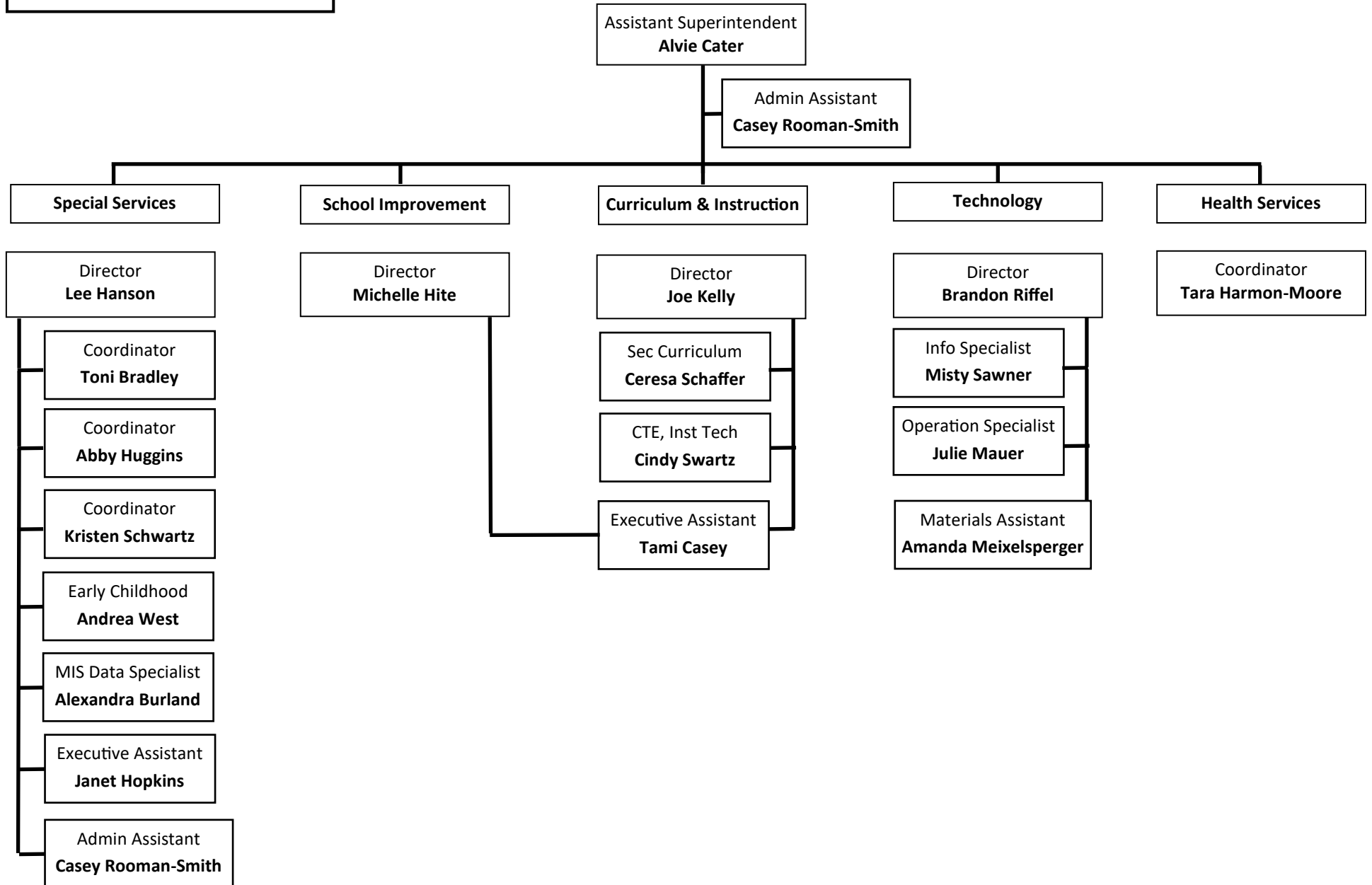
Page 2

USD 232
 District Organization
 Human Resources and
 Building Administration



USD 232

Administrative Organization
Administration & Education



USD 232
 Administrative Organization
 Business & Operations

Assistant Superintendent
Ken Larsen

