



**District Organization**  
2021-22

USD 232  
**De Soto, Shawnee, Lenexa, Olathe  
Communities**

**Board of Education**

President  
Danielle Heikes      Position 6

Vice President  
Ashley Spaulding      Position 2

Board Members

Bill Fletcher      Position 1  
Stephanie Makalous      Position 3  
Rachele Zade      Position 4  
John Gagnat      Position 5  
Rick Amos      Position 7

Superintendent  
**Frank Harwood**

Clerk of the Board  
**Wendy Denham**

Assistant Superintendent  
Administration & Communications  
**Alvie Cater**

Assistant Superintendent  
Facilities & Operations  
**Steve Deghand**

Executive Director  
Elementary Education  
**Carrie Handy**

Executive Director  
Secondary Education  
**Brian Schwanz**

Director  
Technology  
**Brandon Riffel**

Director  
Special Services  
**Lee Hanson**

Director  
Elementary C&I  
**Michelle Hite**

Director  
Secondary C&I  
**Joe Kelly**

Director  
Student Nutrition  
**Jolyn Baldner**

Director  
Finance  
**Julie Stucky**

Page 4

Page 2

Page 3

Page 5

**USD 232**  
 District Organization  
 Elementary Education

Executive Director -  
 Elementary Education  
**Carrie Handy**

Personnel

Human Resources  
 Executive Assistant  
**Leslie Sherman**

District Receptionist  
**Dena Wilkerson**

Elementary Building Administration

Principal  
 Belmont Elementary  
**Pam Hargrove**

SIS  
**Holly Schreiber**

Principal  
 Riverview Elementary  
**Megan Turpin**

Principal  
 Horizon Elementary  
**Steve Crutchfield**

SIS  
**Kristi Hill**

Principal  
 Cedar Trails Early Childhood  
**Andrea West**

Coordinator  
 Parents as Teachers  
**Jamie Fink**

Principal  
 Clear Creek Elementary  
**Kelley Begley-McCall**

SIS  
**Kayla Wiedeman**

Principal  
 Mize Elementary  
**Gerri Balthazor**

SIS  
**Samantha Luchtel**

Principal  
 Prairie Ridge Elementary  
**Kristel Fulcher**

SIS  
**Denise Reinoehl**

Principal  
 Starside Elementary  
**Jan Hicks**

SIS  
**Michelle Brown**

Elementary Curriculum and Instruction

Director  
**Michelle Hite**

DIS Elementary  
**Nichole Gurwell**

DIS Literacy  
**Jeri Powers**

Executive Assistant  
**Tami Casey**

**USD 232**  
 District Organization  
 Secondary Education

Executive Director  
 Secondary Education  
**Brian Schwanz**

Secondary Curriculum & Instruction

Director  
**Joe Kelly**

Sec Curriculum  
**Ceresa Schaffer**

Career Education  
**Cindy Swartz**

DIS Secondary  
**Rachel Mikel**

Materials Assistant  
**Julie Zitlow**

High School Building Administration

Principal  
 De Soto High School  
**Sam Ruff**

Associate Principal  
**Leah Vomhof**

Associate Principal  
**Ryan Johnson**

SIS  
**Abby Huggins**

Principal  
 Mill Valley High School  
**Gail Holder**

Associate Principal  
**Marilyn Chrisler**

Associate Principal  
**Deb Jaeger**

Associate Principal  
**Brent Bechard**

Middle School Building Administration

Principal  
 Lexington Trails MS  
**Clark McCracken**

Associate Principal  
**Susan Slater**

SIS  
**Jamey Seaba**

Principal  
 Mill Creek MS  
**Josh Kindler**

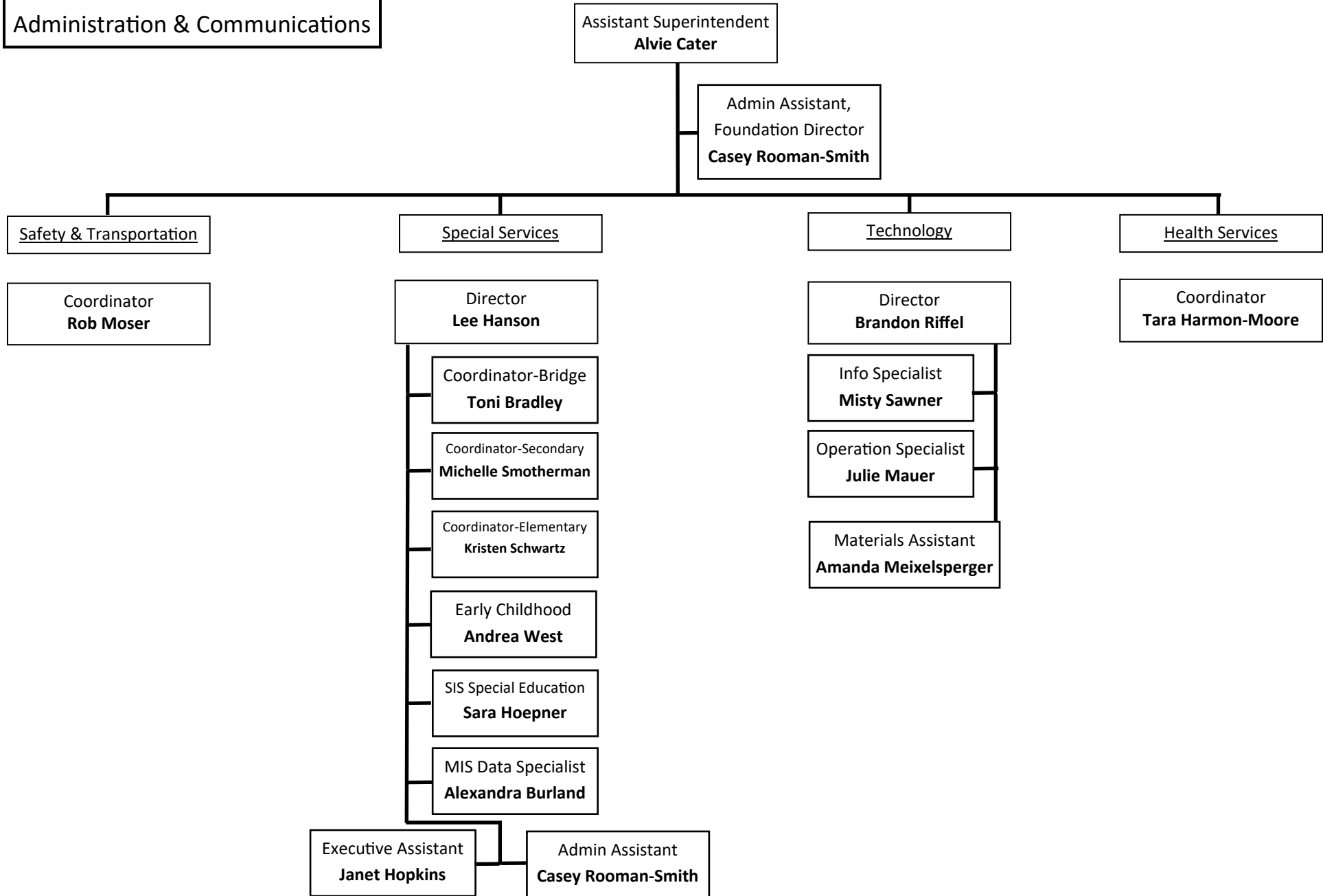
Associate Principal  
**Denise LegoreSeawood**

Principal  
 Monticello Trails MS  
**Jennifer Smith**

Associate Principal  
**Bryan LeBar**

SIS  
**Kelly Robinson**

**USD 232**  
 District Organization  
 Administration & Communications



**USD 232**  
Administrative Organization  
Operations

